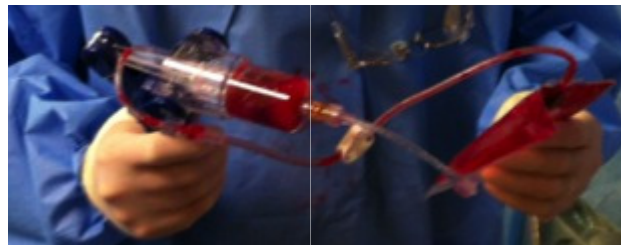
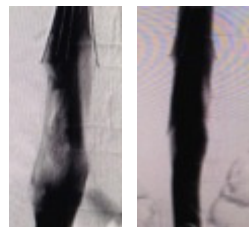
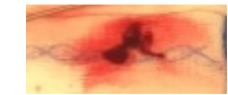
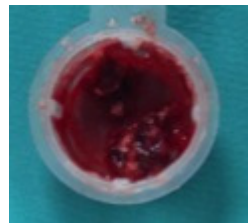
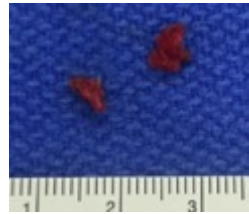
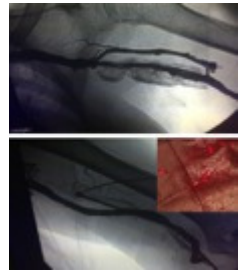
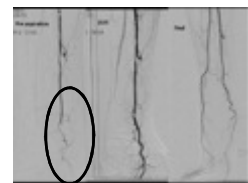
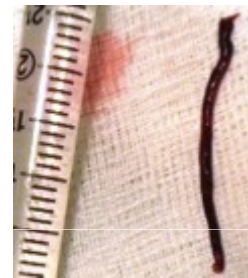


ASPIRE MECHANICAL THROMBECTOMY™



NO CLOT LEFT BEHIND™
HIGH-PERFORMANCE MECHANICAL THROMBECTOMY

CONTROL
MEDICAL TECHNOLOGY

CONTINUOUS & PULSED MECHANICAL THROMBECTOMY

Thrombectomy needs vary based on the size, location, and age of thrombus. Sometimes subtle low force is needed, other times full-force is required.

Certain procedures benefit from continuous force...other procedures only need a quick spot, or touch-up, targeted force. Yet in other situations, pulsed force to rapidly cycle between full and no force is required.

Basic syringe-based systems lack this versatility as syringes offer limited force, control, & volume. Typically, syringes only fill 30ml at a time requiring repeated attachment, stopcock manipulation, filling, detachment, drainage, and re-attachment to catheters. Slow, messy, risky, and inefficient.

Electromechanical systems may deliver more force and volume than basic syringes, but add complexity and cost to the procedure with limited tactile feel and control.

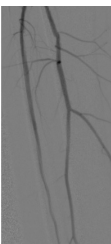
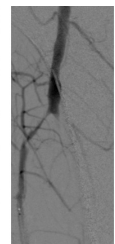
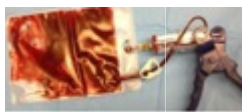
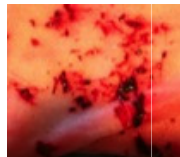
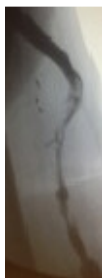
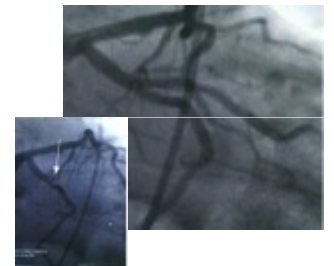
The ASPIRE Mechanical Thrombectomy Driver delivers new control during thrombectomy. Users instantly start, stop, increase, decrease, maintain, and pulse thrombectomy force.

Squeezing the handles increases force and releasing handles stops it. A one-way valve on the plunger purges air in the barrel to maintain thrombectomy force. A one-way valve on the barrel prevents re-injection of the aspirant. The dual valves and a drain bag combine to create a *closed fluid system* to eliminate repeated syringe-catheter detachments and drainage.

- **Instantly Start, Stop, Increase or Decrease Force**
- **Create Continuous & Pulsed Force**
- **Reset Force With Each Release-Squeeze Cycle**
- **Closed System...275+ ml Volume Capacity**
- **Peripheral Vascular Indications**
- **Coronary Vascular Indications**
- **Connects to any thrombectomy catheter with a standard female luer connector.**



ASPIRE Mechanical Thrombectomy Drive Unit / Pump™



Product Codes	Name
30-ASP	ASPIRE Mechanical Thrombectomy Drive Unit / Pump with 250ml Drain Bag and Connection Tube

CONTROL
MEDICAL TECHNOLOGY

Manufactured for:
Control Medical Technology
2500 South State Street, Suite 254
Salt Lake City, Utah 84115 USA
www.CONTROLMEDTECH.com
(954) 534-9345 Office
(954) 457-2448 Fax

Manufactured By:
ZIEN Medical
2500 South State Street, Suite D240
Salt Lake City, Utah 84115 USA
www.ZIENMEDICAL.com
(385) 646-4419 Office

European Representative:
Medicor Medical Supplies NV/SA
Timmerik 2, B-3020
Herent, BELGIUM
www.MEDICOR.be
+32 (0) 16 27 1818 Office
+32 (0) 16 22 4423 Fax

ASPIRE Mechanical Thrombectomy Drivers Units / Pumps are FDA cleared to aspirate fluids from the body and to be connected to thrombectomy catheters for the removal of fresh, soft emboli and thrombi from vessels in the peripheral and coronary vasculature.

